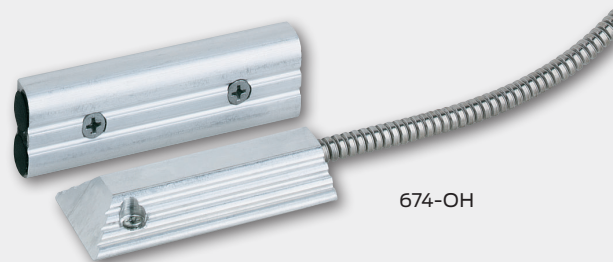




Door position switches



674-OH

Overhead door, floor mount magnetic switch

Overview

Door position switches are used to detect the open or closed status of an opening and then send this status to a control panel. They come in a variety of shapes and sizes and are designed for monitoring door positions, roof hatches, gates etc.

Concealed SPDT magnetic switches

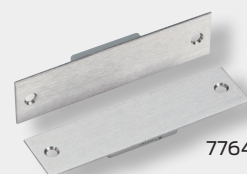
- For wood doors and frames
- 0.3 Amps @ 30 VDC
- UL10C/CAN-ULC-S104



679-05

Concealed/flush mount magnetic switches

- For aluminum, wood and hollow metal doors
- 0.25 Amps @ 30 VDC
- UL10C/CAN-ULC-S104



7764

- For hollow metal doors and frames
- 0.3 Amps @ 30 VDC
- UL10C/CAN-ULC-S104



679-05 HM

Surface mount magnetic switches

- For aluminum, wood and hollow metal doors
- 0.25 Amps @ 30 VDC
- UL10C/CAN-ULC-S104



7766

- For wood doors and metal frames
- 0.3 Amps @ 30 VDC
- UL10C/CAN-ULC-S104



679-05 WD

Ordering information

- **674-OH** - Overhead door floor mount
- **679-05** - Wood door and frame
- **679-05HM** - Hollow metal door and frame
- **679-05WD** - Wood door and metal frame
- **7764** - Concealed/flush mount
- **7766** - Surface mount

Allegion, the Allegion logo, Schlage, and the Schlage logo are trademarks of Allegion plc, its subsidiaries and/or affiliates in the United States and other countries. All other trademarks are the property of their respective owners.

About Allegion

Allegion (NYSE: ALLE) is a global pioneer in safety and security, with leading brands like CISA®, Interflex®, LCN®, Schlage®, SimonsVoss® and Von Duprin®. Focusing on security around the door and adjacent areas, Allegion produces a range of solutions for homes, businesses, schools and other institutions. Allegion is a \$2 billion company, with products sold in almost 130 countries. For more, visit www.allegion.com.

KRYPTONITE ■ **LCN** ■  ■ **STEELCRAFT** ■ **VON DUPRIN**



© 2019 Allegion
005005, Rev. 12/19
www.allegion.com/us